

65 Newgate Street
Morpeth
Northumberland
NE61 1AY

Tel: 01670 518 612
Fax: 01670 504 805
morpeth@c4sightcare.com

Northumberland House
Princess Square
Newcastle upon Tyne
NE1 8ER

Tel: 0191 232 1002
Fax: 0191 232 3802
newcastle@c4sightcare.com

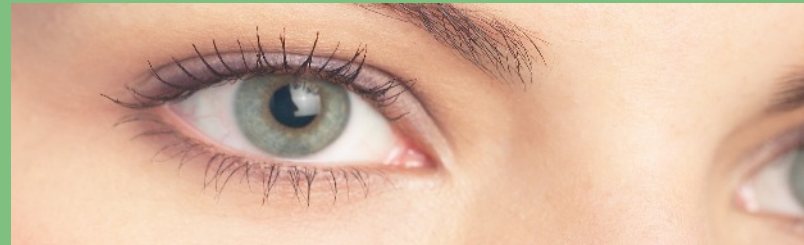
Claremont Wing Eye Dept.
Royal Victoria Infirmary
Queen Victoria Road
Newcastle upon Tyne
NE1 4LP

Tel: 0191 282 0252 (office)
Tel: 0191 221 0934 (shop)
Fax: 0191 221 2051
rvi@c4sightcare.com

Widdrington Health Centre
Grange Road
Widdrington
Northumberland
NE61 5LX

Please contact our Morpeth branch for all enquiries.

www.c4sightcare.com



HOT SPOON BATHING

C4 Sightcare
OPTOMETRISTS

First wash your hands. Wrap a piece of cotton wool round the end of a wooden spoon. Bend over a jug or bowl of boiling water, dip the wool, and bring it up close to the sore eye, which must be kept shut. When you can bear the heat, let it touch the lids. When the pad cools dip it again, keeping the water as hot as can be borne by adding fresh boiling water. Go on doing this for a quarter of an hour.

Repeat this three times a day, or as directed.

Contact Numbers:

C4 Sightcare
Morpeth 01670 518612

C4 Sightcare
Newcastle 0191 2321002

Eye Casualty Royal
Victoria Infirmary
Claremont Wing
Newcastle 0191 2336161

Sunderland Eye Infirmary
Sunderland 0191 5283616

NHS Direct (24 Hours) 0845 4647

www.nhsdirect.nhs.uk