

*Information produced by the College of  
Optometrists in conjunction with the Association of  
Optometrists*



65 Newgate Street  
Morpeth  
Northumberland  
NE61 1AY

Tel. 01670 518 612  
Fax. 01670 504 805  
morpeth@c4sightcare.com



Northumberland House  
Princess Square  
Newcastle upon Tyne  
NE1 8ER

Tel: 0191 232 1002  
Fax: 0191 232 3802  
newcastle@c4sightcare.com



Claremont Wing Eye Dept.  
Royal Victoria Infirmary  
Queen Victoria Road  
Newcastle upon Tyne  
NE1 4LP

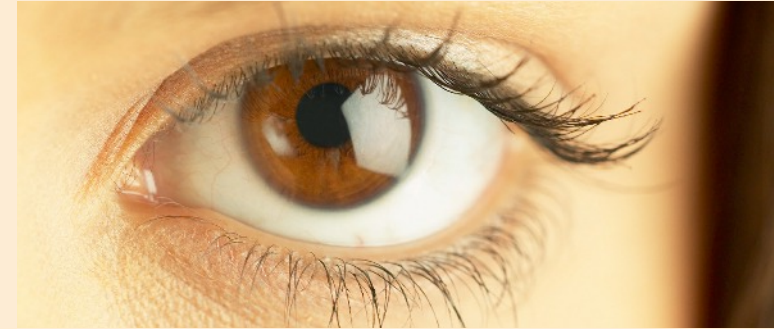
Tel: 0191 282 0252 (office)  
Tel: 0191 221 0934 (shop)  
Fax: 0191 221 2051  
rvi@c4sightcare.com



Widdrington Health Centre  
Grange Road  
Widdrington  
Northumberland  
NE61 5LX

Please contact our Morpeth branch for all  
enquiries.

[www.c4sightcare.com](http://www.c4sightcare.com)



Eye health for diabetics

C4 Sightcare  
OPTOMETRISTS

# Eye health for diabetics

Your eye has a lens and an aperture (opening) at the front, which adjusts to bring objects into focus on the retina at the back of the eye. The retina is made up of delicate tissue that is sensitive to light, rather like the film in the camera.

At the centre of the retina is the macula which is a small area about the size of a pinhead. This is most highly specialised part of the retina and it is vital because it enables you to see fine detail and read small print. The other parts of the retina give you side vision (peripheral vision). Filling the cavity of the eye in front of the retina is a clear jelly-like substance called the vitreous humour.

Diabetes can affect the eye in a number of ways. These usually involve the fine network of blood vessels in the retina - hence the term diabetic retinopathy.

## The Importance of Early Treatment

Although your vision may be good, changes can be taking place to your retina that need treatment. And because most sight loss in diabetes is preventable.

## Early diagnosis is vital. Have an eye examination every year

Do not wait until your vision has deteriorated to have an eye test.

Your family doctor, diabetologist or optometrist can examine for diabetic retinopathy. Photographs are sometimes used to detect abnormalities without any other form of test. If a problem is found you will be referred to a consultant ophthalmologist (a doctor specialising in eyes) at a hospital eye clinic.

Remember, however, that if your vision is getting worse, this does not necessarily mean you have diabetic retinopathy. It may simply be a problem that can be corrected by glasses.

## What is the Treatment?

Most sight-threatening diabetic problems can be prevented by laser treatment if it is given early enough. It is important to realise however, that laser treatment aims to save the sight you have - not to make it better. The laser, a beam of high intensity light, can be focused with extreme precision. So the blood vessels that are leaking fluid into the retina can be sealed.

If the new blood vessels are growing, more extensive laser treatment has to be carried out. In eight out of ten cases laser treatment causes the new blood vessels to disappear

If you require more information you can Contact

Royal National Institute for the Blind

224 Great Portland Street, London, W1W 5AA. RNIB Helpline 0845 766 9999 (local call rates)

Publications can be ordered from RNIB Customer Services, PO Box 173, Peterborough PE2 6WS

Tel 0845 702 3153 (local Call rates)

RNIB Helpline can:

put you in touch with specialist advice Services.

Send you free information and leaflets. Give you details of support groups and services in your area.

Call us Monday to Friday 9.00am - 5.00pm.

Calls charged at local rates.